

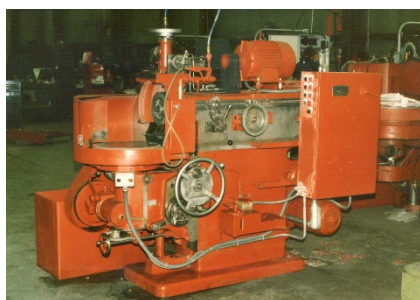
Arter Grinder Model D Standard Factory Specifications



Description	D-12	D-16
CAPABILITIES		
Chuck Nominal Diameter	12"	16"
Chuck Face Diameter	13"	17"
Chuck Pilot Hole	.7505/.7500	.7505/.7500
Swing in Coolant Pan	25"	25"
Standard Size Grinding Wheel	16" x 1 1/2" x 8"	16" x 1 1/2" x 8"
Wheel Minimum and Maximum Diameter	10 1/2" - 16"	10 1/2" - 16"
Distance Top of Chuck to Center of Grinding Wheel- Maximum	17"	17"
Distance Top of Chuck to Center of Grinding Wheel- Minimum	4 3/4"	4 3/4"
Maximum Angle Convex	20°	20°
Maximum Angle Concave	10°	10°
Special Adaptor for Maximum Convex	45°	45°
Wheelhead or Table Travel	13 1/8"	13 1/8"
SPEEDS AND FEEDS		
Chuck Unlimited Between-RPM	60-250	60-250
Wheel Speed in RPM's	1400	1400
Wheelhead Speeds Unlimited	0-10 fpm	0-10 fpm
Table Speeds Unlimited Between	-	-
One Turn on Feed Hand/Wheel is Equivalent	.040	.040
Each Graduation. Of Feed Dial is Equivalent	.0005	.0005
Power Feed Adjustment Each Revolution	.0001 to .0017	.0001 to .0017
Each Ratchet Tooth Equals	.0001	.0001
DRIVE		
Main Drive Motor-60 cycle	7 1/2 HP	7 1/2 HP
Hydraulic Drive Motor-Chuck	-	-
Electric Drive Motor-Chuck	2 HP	2 HP
Hydraulic Pumps	2 HP	2 HP
Coolant Pump Motor	1/4 HP	1/4 HP
MISCELLANEOUS		
Oil Reservoir Capacity	14 gal.	14 gal.
Coolant Tank Capacity	55 gal.	55 gal.
Net Weight Machine	6,000 lbs	6,200 lbs.
Floor Space Occupied	84" x 60"	84" x 60"



a brand of Obsidian Manufacturing Industries, Inc.
 5015 28th Avenue
 Rockford, IL 61109
 p. (815)962-8700
 f. (815)398-0285
 e. info@artergrinder.com
www.artergrinder.com



All Arter Grinder models will give you a similar finish but important factors to consider include operator experience, parts characteristics, and rate of production of parts.